

SARTORIUS

Secura[®] NTEP-Certified Balances Legal for Trade

Reliable Weighing for Faster and Better Results

100% NTEP-Compliant Weighing

isoCAL: Reliability Guaranteed

Temperature fluctuations can distort the accuracy of your weighing results. Secura[®] balances rule out this risk right from the start with their temperature and time controlled calibration and adjustment function, isoCAL. In addition, the internal Cal Audit Trail function documents each calibration and adjustment procedure, generating a 100% traceable audit trail for your quality assurance.

Continuous Real-Time Level Monitoring

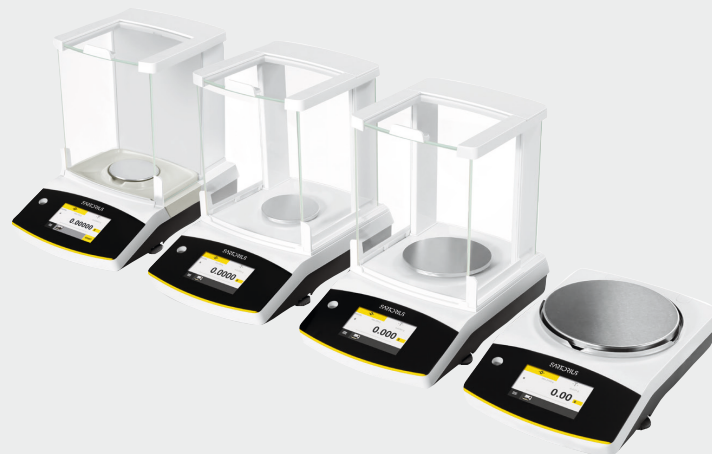
The LevelControl function ensures that your balance is perfectly level. It continuously monitors the level status in real time, instantly detecting any tilt. In this case, it will respond immediately to ensure data integrity: You will be alerted, and data transfer to a printer or computer will be temporarily blocked. The Secura[®] balance will then reliably guide you in real-time throughout the leveling procedure. With LevelControl, you will have total peace of mind knowing that your measurements are fully accurate.



100% Legal for Trade

Key Features

- Monitoring of compliance with the USP minimum sample weight limits – SQmin
- Password protection of set-up settings
- Fully automatic temperature- and time-controlled internal calibration and adjustment – isoCAL
- Temporary blockage of data transfer to a printer or a computer when uncertain weighing results are detected, such as a result that is below the USP minimum sample weight limit, the balance is not level or isoCAL (internal calibration and adjustment) needs to be performed
- Storage of all data of calibration procedures – Cal Audit Trail



Model Information

| Model | | 224-1NUS | 124-1NUS | 1103-1NUS | 613-1NUS | 313-1NUS | 6102-1NUS | 3102-1NUS | 1102-1NUS | 6101-1NUS |
|--|------|----------|----------|-----------|----------|----------|-----------|-----------|-----------|-----------|
| Readability Scale interval (d) | mg | 0.1 | 0.1 | 1 | 1 | 1 | 10 | 10 | 10 | 100 |
| Maximum capacity (Max) | g | 220 | 120 | 1,100 | 610 | 310 | 6,100 | 3,100 | 1,100 | 6,100 |
| Repeatability | | | | | | | | | | |
| At 5% load, typical value | ± mg | 0.08 | 0.08 | 0.5 | 0.5 | 0.5 | 5 | 5 | 5 | 50 |
| At approx. maximum load, typical value | ± mg | 0.1 | 0.1 | 1 | 1 | 1 | 10 | 10 | 10 | 50 |
| Linearity deviation | | | | | | | | | | |
| Limits | ± mg | 0.2 | 0.2 | 2 | 2 | 2 | 20 | 20 | 20 | 100 |
| Typical value | ± mg | 0.06 | 0.06 | 0.6 | 0.6 | 0.6 | 6 | 6 | 6 | 60 |
| "Minimum initial weighing according to USP (United States Pharmacopeia), Chap. 41" | | | | | | | | | | |
| Optimum minimum initial weighing | g | 0.082 | 0.082 | 0.82 | 0.82 | 0.82 | 8.2 | 8.2 | 8.2 | 82 |
| Typical minimum initial weighing | g | 0.16 | 0.16 | 1 | 1 | 1 | 10 | 10 | 10 | 100 |
| Typical measurement time | s | ≤ 2.0 | ≤ 2.0 | ≤ 1.5 | ≤ 1.5 | ≤ 1.5 | ≤ 1.0 | ≤ 1.0 | ≤ 1.0 | ≤ 1.0 |
| Typical stabilization time | s | ≤ 1.5 | ≤ 1.5 | ≤ 1.0 | ≤ 1.0 | ≤ 1.0 | ≤ 0.9 | ≤ 0.9 | ≤ 0.9 | ≤ 0.9 |
| Weighing pan size | mm | Ø 90 | Ø 90 | Ø 120 | Ø 120 | Ø 120 | Ø 180 | Ø 180 | Ø 180 | Ø 180 |
| Weighing chamber height* | mm | 209 | 209 | 209 | 209 | 209 | - | - | - | - |

* upper edge of the weighing pan to the lower edge of the upper draft shield panel
 NTEP Approval no. 21-013
 Measurement Canada no. AM-6163

Please contact your Sales Representative or any of our authorized Partners for more information.

Find out more:
sartorius.com