

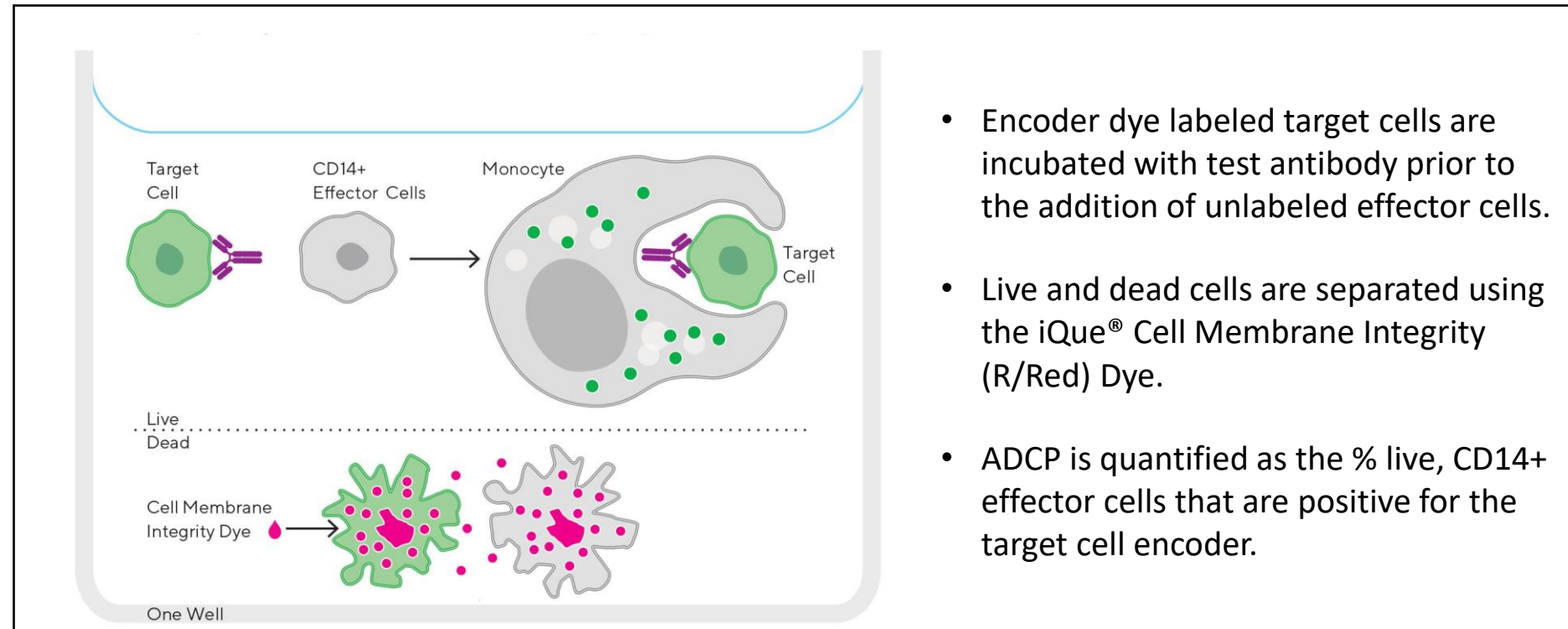
Accelerating ADCP screening using the iQue® Advanced Flow Cytometry Platform

Kirsty McBain¹, Caroline Weldon², Clare Szybut¹, Tim Dale¹ and Mark Carter²
 Sartorius Corporation, ¹Royston, UK; ²Albuquerque, NM
 *Corresponding author: Kirsty.McBain@sartorius.com

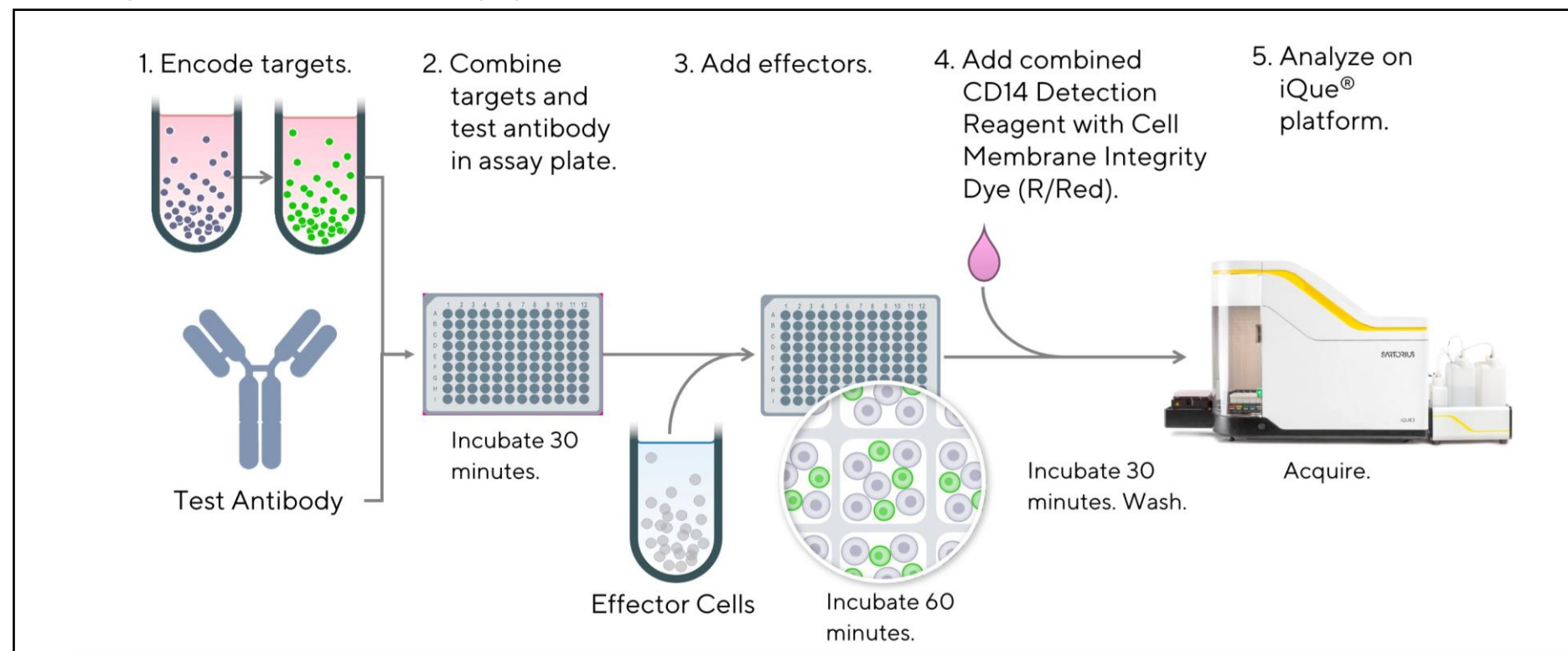
Introduction

- Antibody-dependent cellular phagocytosis (ADCP) is monoclonal antibody (mAb)-stimulated engulfment and clearance of specific cellular targets such as tumor cells.
- Evaluation of mAbs in drug development requires broad MoA characterization, including effects on ADCP.
- Here we present an *in vitro* assay for quantification of ADCP in 96- or 384-well plates using the iQue® advanced flow cytometry platform.
- The iQue® Human Antibody Dependent Cellular Phagocytosis Kit measures co-localization between live target cells and CD14+ effector cells to provide a readout for ADCP response.
- These data exemplify the power of iQue® ADCP assay to generate pharmacological outputs for mAb ADCP activity with the potential to enhance drug discovery or biological research applications.

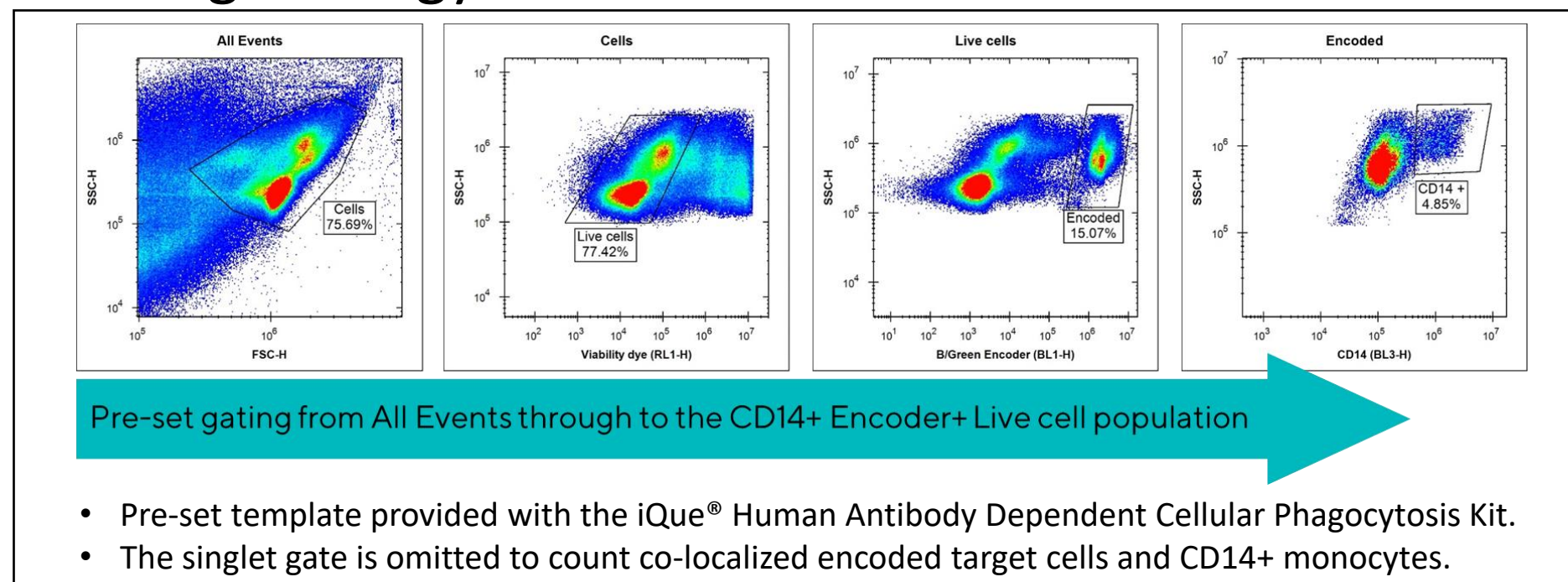
Assay Concept



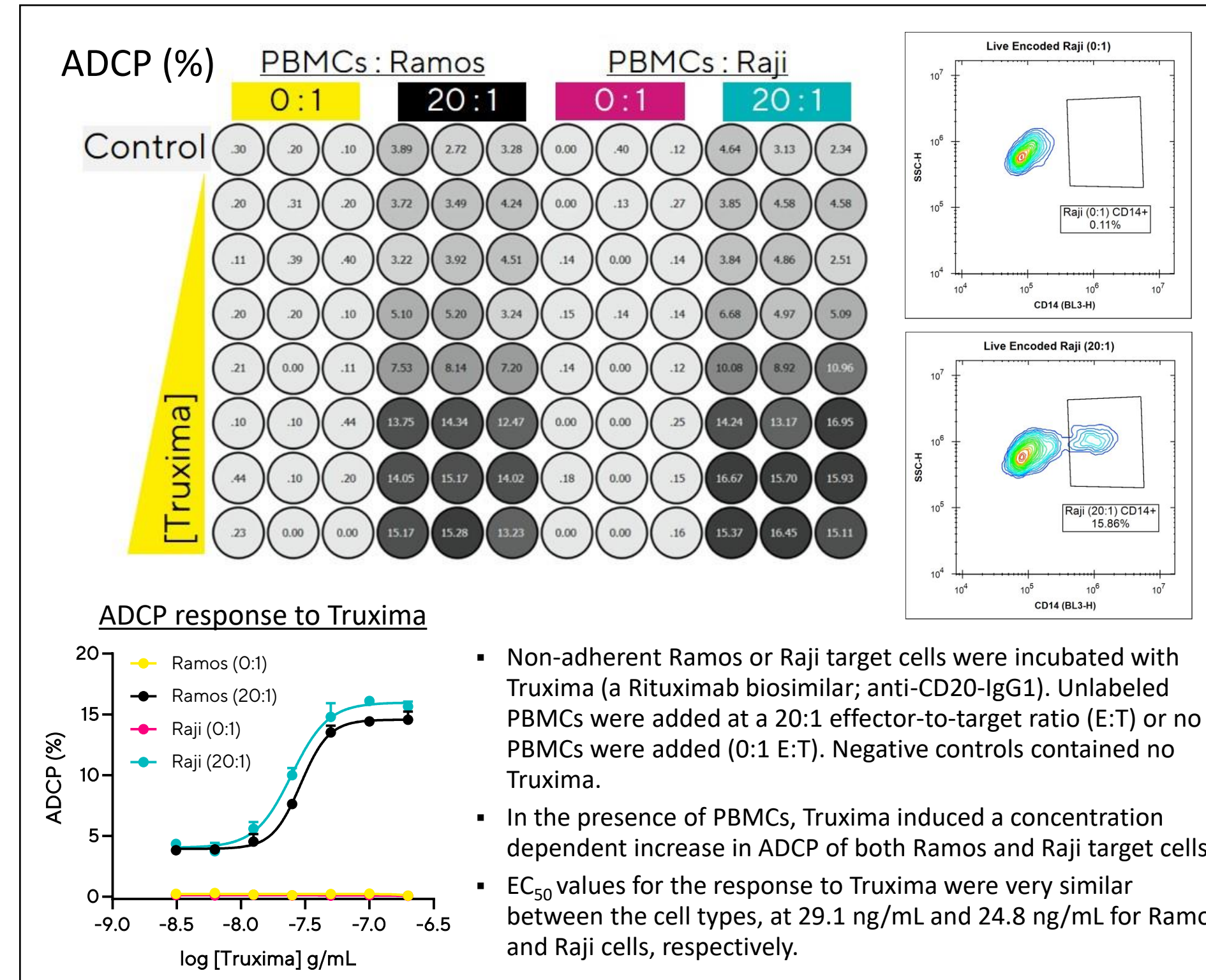
Experimental Approach



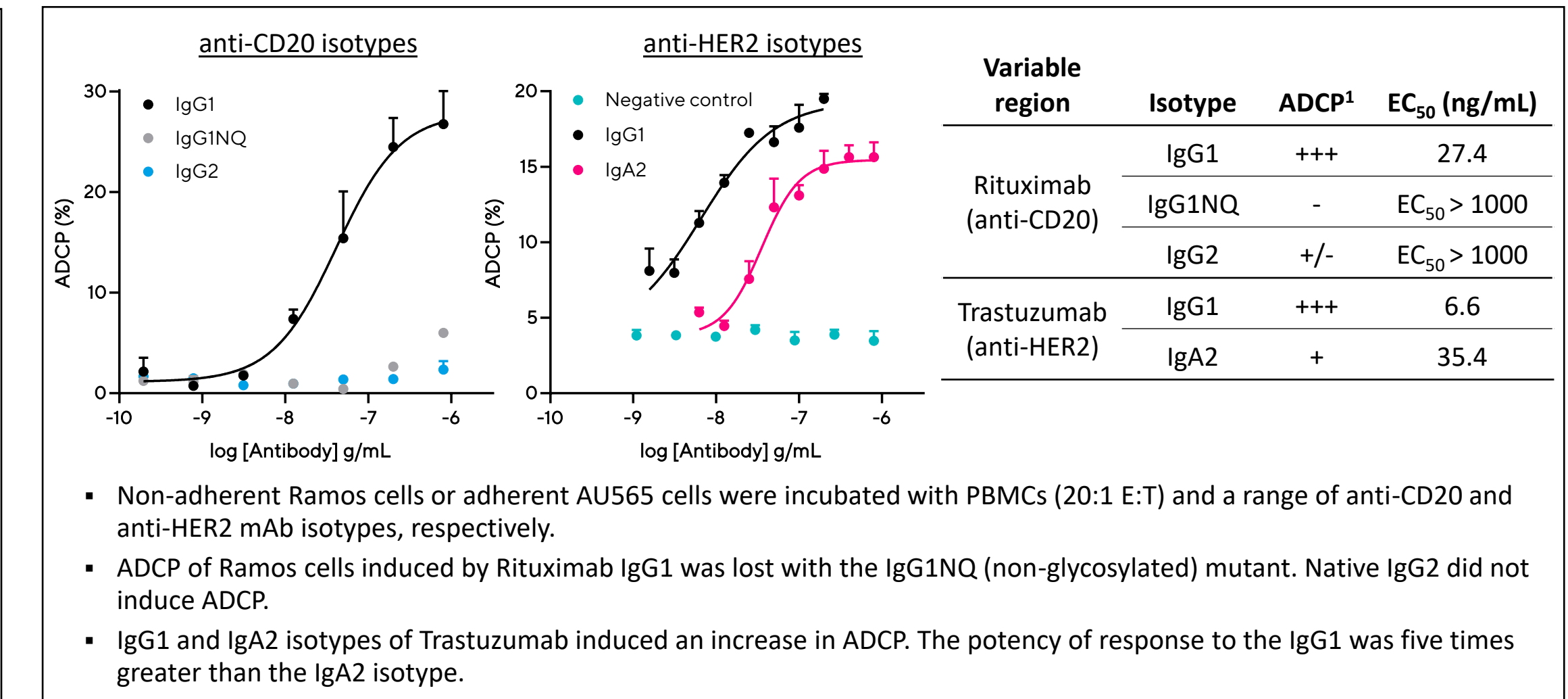
Gating Strategy



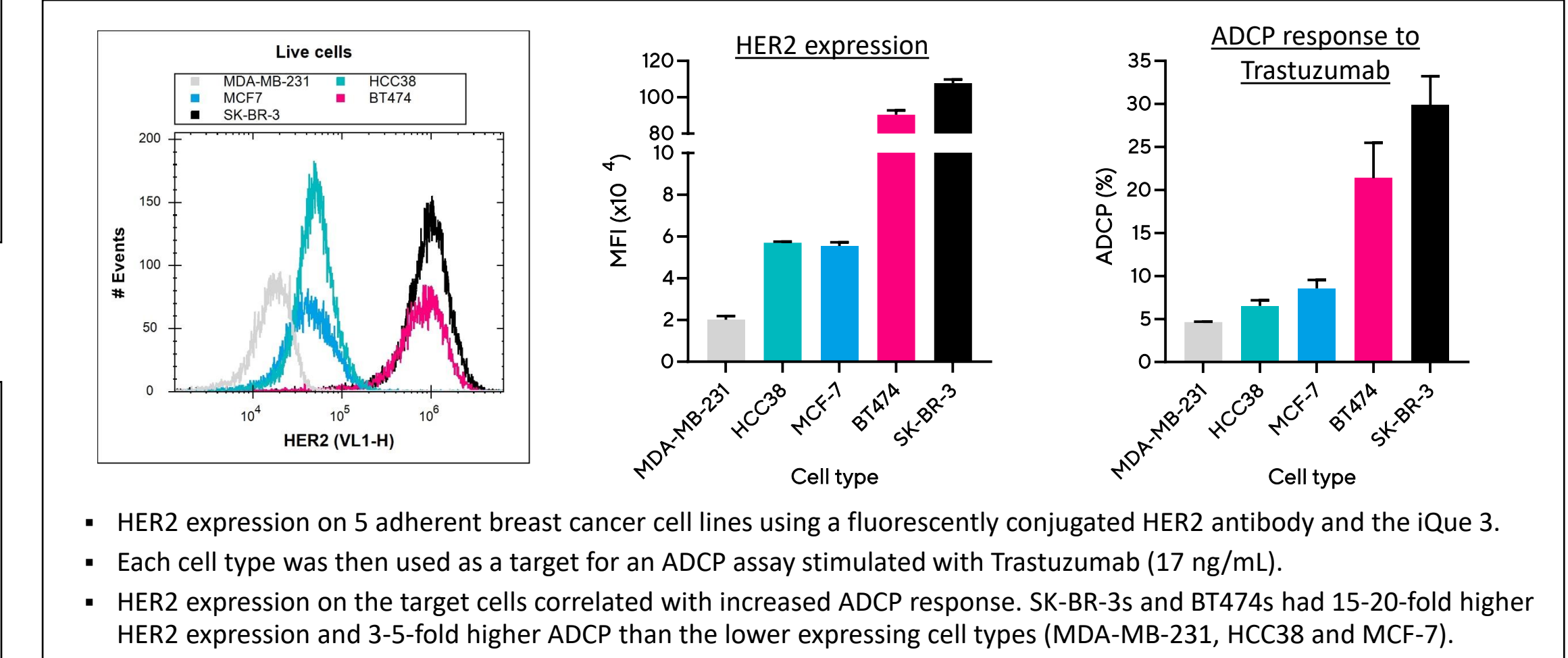
Results – ADCP increases with Truxima concentration



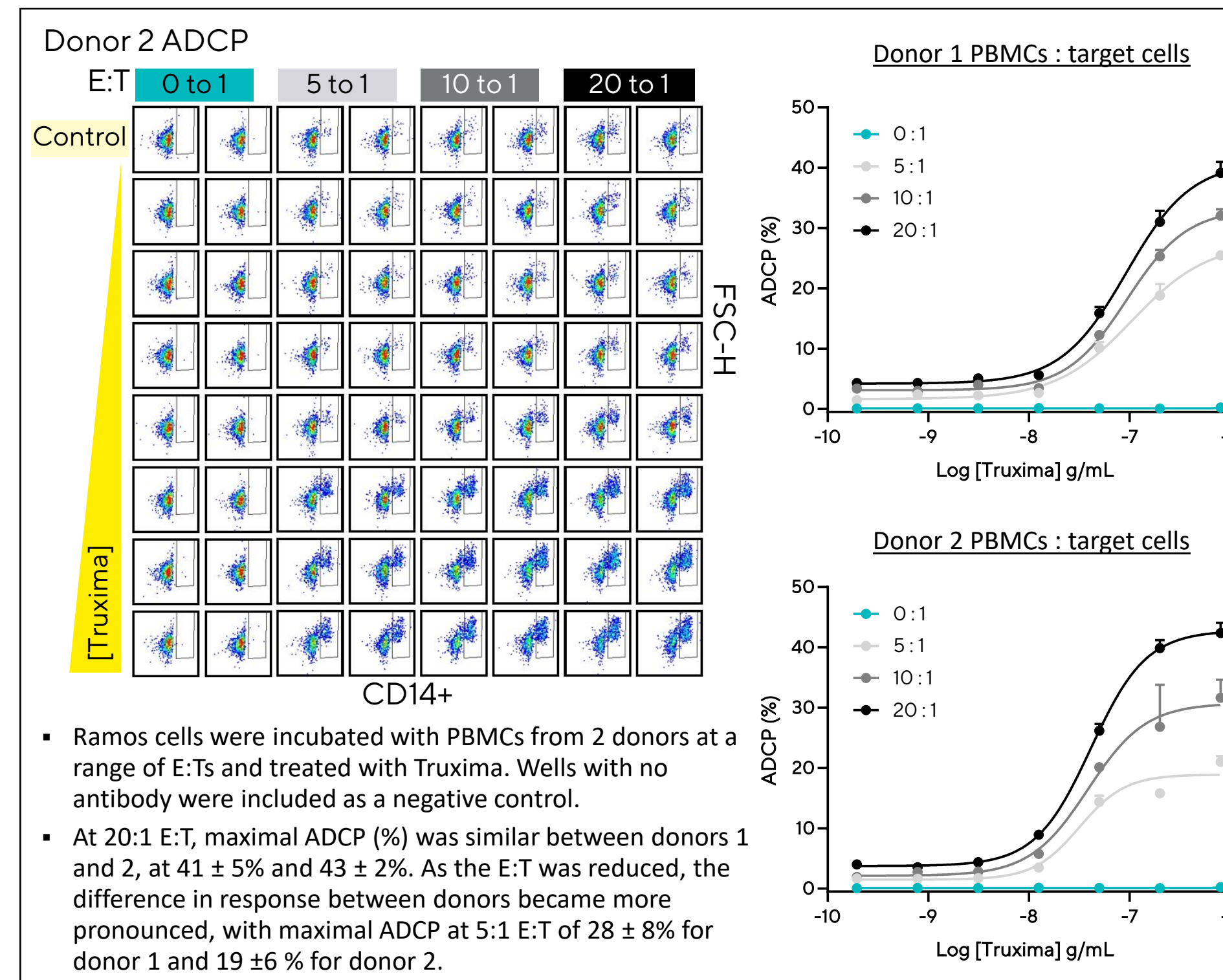
Results – mAb profiling with adherent and non-adherent targets



Results – Target antigen expression correlates with ADCP response



Results- Response differs between effector cell donors



Results – M2 but not M1 macrophages elicit ADCP response

