

SIMCA®

Application Note

Database Import Wizard

10 June 2020

Introduction

The database import features of SIMCA 13 have been completely enhanced. The new functionality improves the connectivity, simplifies the user experience, and reduces the user setup effort for reoccurring data fetches. The SIMCA import function fully supports the industry standards OPC and ODBC. Furthermore, with Umetrics' SimApi internal connector, used by SIMCA-online, virtually any data source system is enabled to be connected to SIMCA. Most industry leading data source vendors allows more than one of these ways to connect to their platform.

Store your settings

It is no longer necessary to reconfigure tags, aliases or filters each time data is retrieved. Repeated data fetches are performed faster using a settings file that is used to store commonly used data retrieval settings. This file may also be shared among other users. An alias that can be added to each variable ends up as a secondary ID in your data set!

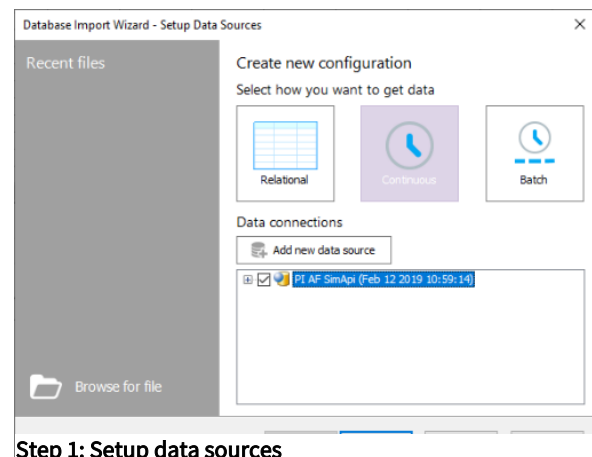
Speed up your fetches

Data retrieval efficiency is significantly improved by splitting fetches into sub tasks that are performed in parallel. Additional performance is achieved through the added ability to fetch several data sheets at the same time.

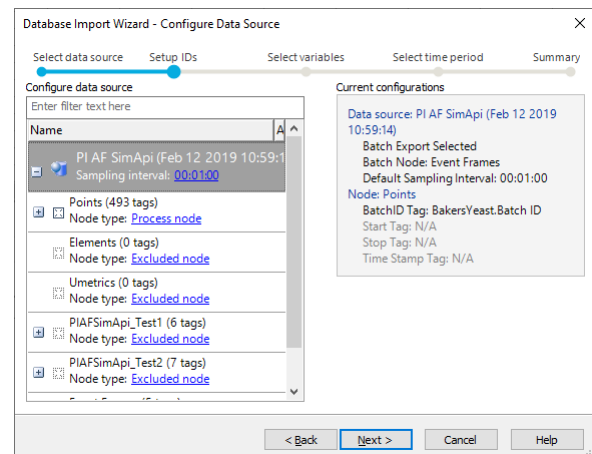
Reduce the size of your data

The SIMCA-online products can perform predictions with different execution intervals in different stages of the production. Now, with the new database import wizard, it is also a simple task to retrieve different data in different time resolutions.

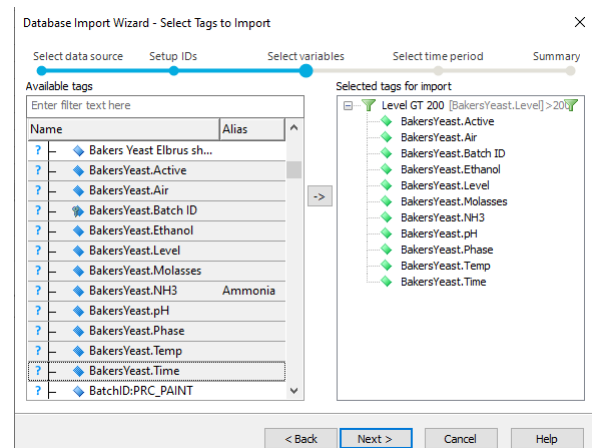
In addition, filters, set up with complex logical algorithms, can be applied to the fetch to reduce the amount of transferred data from the data source. These features lighten the load on the data source and result in smaller SIMCA project files.



Step 1: Setup data sources



Step 2: Configure data sources

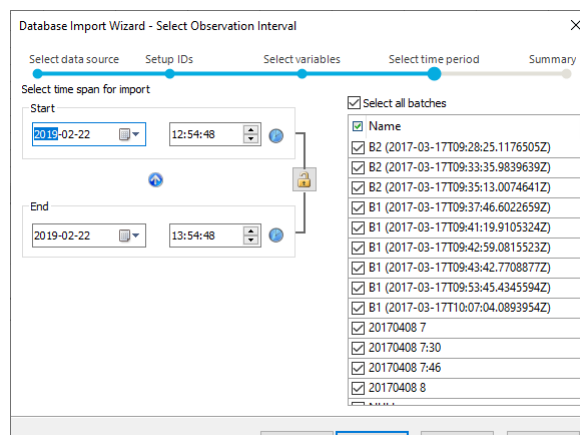


Step 3: Select and filter tags to import

Easily import data to SIMCA

Importing data to SIMCA is accomplished in only four steps:

1. Setup data sources to connect to
2. Configure data sources
3. Select tags to import
4. Select start/end time or batches to import



Step 4: Select start/end time or batches to import