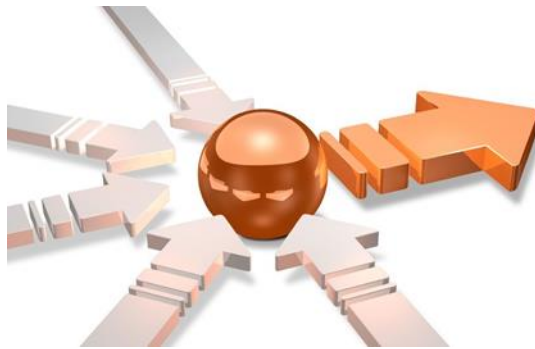


## OPC DA SimApi User Guide

2020-06-09



# Contents

<b>1</b>	<b>Introduction.....</b>	<b>3</b>
1.1	Features.....	3
1.1.1	Support of Array data in tags.....	3
1.1.2	Batch id cache for the last observation .....	4
1.1.3	Read tags from text file.....	4
<b>2</b>	<b>Prerequisites.....</b>	<b>5</b>
<b>3</b>	<b>Installation and setup .....</b>	<b>5</b>
3.1	OPC DA SimApi Configuration.....	5
3.2	The XML Configuration File .....	7
3.3	Settings .....	8
3.4	Troubleshooting .....	9
<b>4</b>	<b>Support.....</b>	<b>10</b>

# 1 Introduction

This document is the user guide for the **OPC DA SimApi** from Sartorius Stedim.

It uses **OPC DA** (Data Access) to connect to an OPC DA Server. For more information about OPC DA, see [http://en.wikipedia.org/wiki/OPC\\_Data\\_Access](http://en.wikipedia.org/wiki/OPC_Data_Access).

For a detailed list of changes in different versions of this SimApi, see the **Version Info.txt** file that comes with the installation.

This SimApi can be used by Easy Analytics, SIMCA, or SIMCA-online (see limitation below).

For more information on available SimApis, see [www.umetrics.com/simapi](http://www.umetrics.com/simapi).

## 1.1 Features

- Reading current data through the OPC interfaces OPC DA 2.x or OPC DA 3.x.
- Write back of data from SIMCA-online to the OPC server.
- Basic filtering of which branches (nodes) will be exposed through the SimApi.
- Support for tags with array data. If configured for it, the SimApi will expand array data to multiple individual tags.
- Configurable batch id cache that holds one observation for one clock cycle (only). This can be used as a workaround to prevent the SIMCA-online server from ending a phase or batch because of sporadic and short communication problems with the OPC server.
- If browsing is NOT supported by OPC DA Server, tags can be loaded from a text file
- Multiple instances of the OPC DA SimApi to be configured and used from the same SIMCA-online server. This lets you connect to multiple databases on one or more database servers.

Since OPC DA is for current data only, this SimApi does **not** support reading historical data. Nor does it make sense to use OPC DA in Easy Analytics or SIMCA (offline) because you would only be able to read the current value, one at a time.

Note that this SimApi does not implement a batch node for batch data.

The sub sections describe some of the above features in detail.

### 1.1.1 Support of Array data in tags

Tags in OPC can hold array data; i.e. multiple values stored in one tag. The Umetrics Suite products cannot deal with array data so this SimApi works around this by expanding array data for specified tags into individual values put in multiple new virtual tags that SIMCA-online<sup>1</sup> can use. These virtual tags are created in a new node with the same name as the tag with array data.

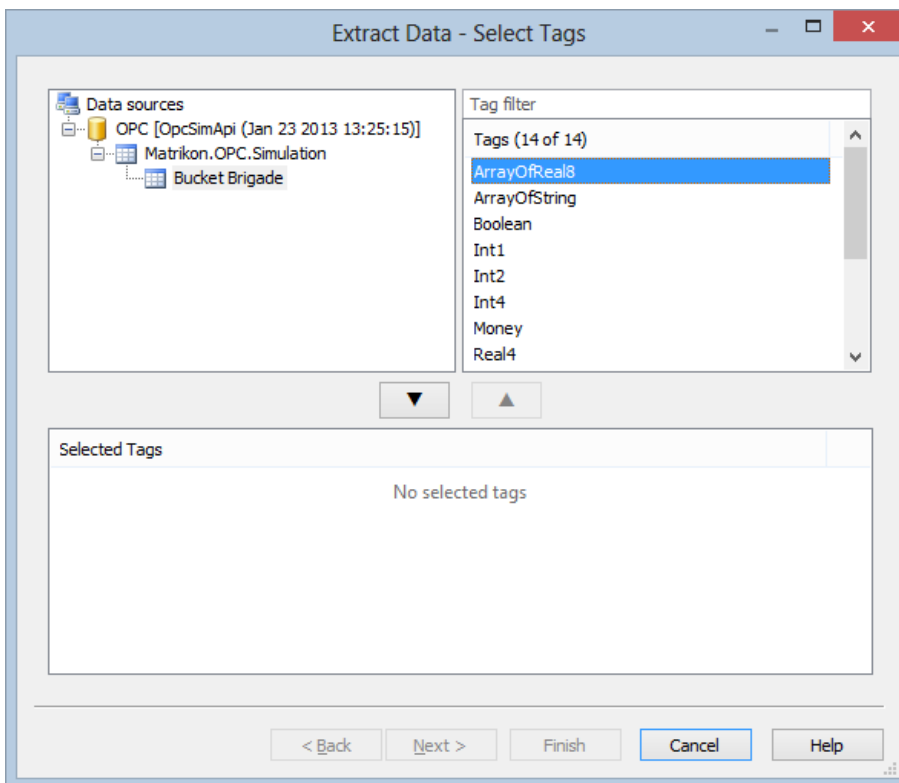
As SIMCA-online reads tag names when the server starts, the array is **not** allowed to change size. If the array has a different size from when configuring it, a message will be written to the log file and **missing values** will be returned for the whole array.

You have to explicitly configure each tag that contains array data in order for SIMCA-online to be able to recognize it. This configuration is made in the XML-file and the necessary syntax is given in 0 below.

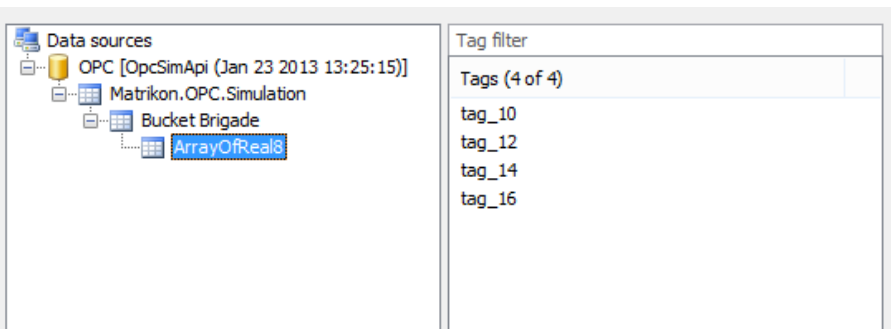
---

<sup>1</sup> Only SIMCA-online can handle array data like this. SIMCA and previous products such as SIMCA-Batch On-Line and SIMCA-4000 does not support nodes inside nodes which is a requirement.

This is how an array tag looks in SIMCA-online before being configured as array data:



This is how the same dialog looks after configuring the tag as holding Array data: Notice that four individual tags now are listed. These don't exist in OPC but rather are generated by the SimApi for use in SIMCA-online.



Note that support of array data in tags does not work in combination with Read tags from text file, see 1.1.3 below.

### 1.1.2 Batch id cache for the last observation

SIMCA-online will end a phase or batch if the batch id read is missing. This can happen if there is a temporary communication problem with the OPC server.

To work around this problem the SimApi can be configured to implement a cache of the last read observation's batch id. This batch id will then be reused for the next observation if there is a temporary problem accessing the OPC server.

### 1.1.3 Read tags from text file

Some OPC DA servers do not support browsing for branches to select which ones to expose through the SimApi. In this case the SimApi cannot be configured using the graphical user interface to select the branches.

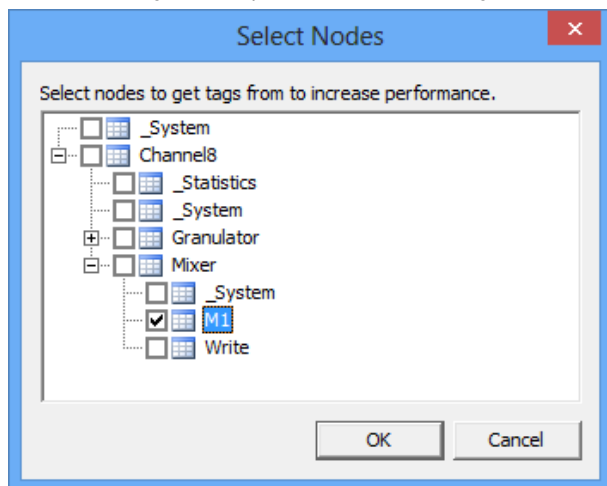
For this reason the OPC DA SimApi can be configured to read tags from a text file instead. To enable this mode, set the "BrowseSupported" key in the XML setting file to 0.

The text file containing the tags should be named `opcda_tags.txt` and should also be located in the configuration folder.

Specify one tag per row in the file. Here is an example with two tags:

```
Channel8.Mixer.M1.M1_Tag1
Channel8.Mixer.M1.M1_Tag2
```

These two tags correspond to the following branch.



## 2 Prerequisites

This SimApi requires the **OPC Core Components Redistributable** to be installed on the computer where you want to use the SimApi.

Go to [opcfoundation.org](http://opcfoundation.org) and download the latest available OPC Core Components. You should download the 32-bit (x86) or 64-bit (x64) version that matches the **Windows version** of the computer you will use the SimApi on.

Note that the 64-bit version of the Core Components Redistributables installs the 32-bit version as well, so it is the only package that needs to be installed on 64-bit systems (even if you plan to use a 32-bit SimApi there).

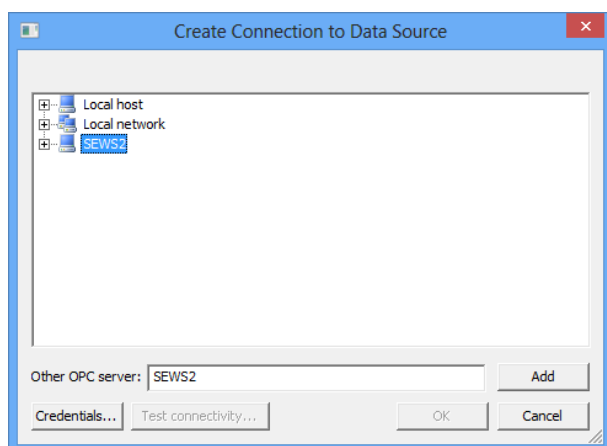
## 3 Installation and setup

Refer to the **SimApi Guide** located at [umetrics.com/simapi](http://umetrics.com/simapi) for how to install and setup this SimApi.

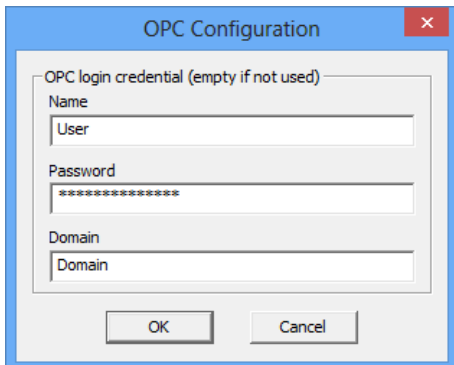
### 3.1 OPC DA SimApi Configuration

A range of settings are required for the SimApi to connect to your OPC server. All settings that you make using the graphical configuration described below are saved in the XML-file (see below).

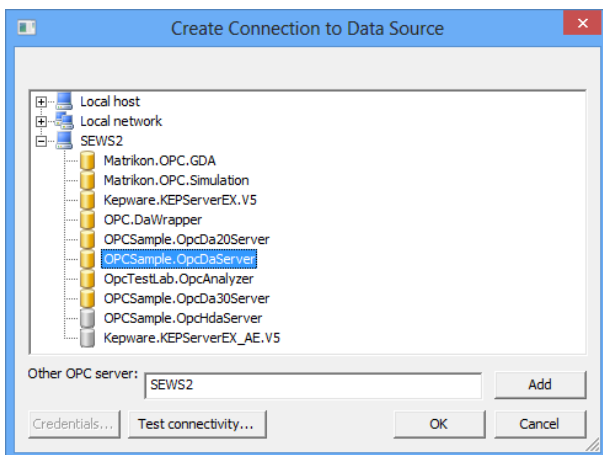
Browse to the computer where the OPC Server is located using the + before Local network shown in the pictures below, or type a computer name and click the **Add** button. This is how the dialog looks after adding a computer:



After selecting a server, you can optionally use the **Credentials**-button to specify a user, domain and password that you want to connect to the computer with. If not provided the account you are currently logged on as will be used for the configuration, but SIMCA-online will per default connect as the local machine account.



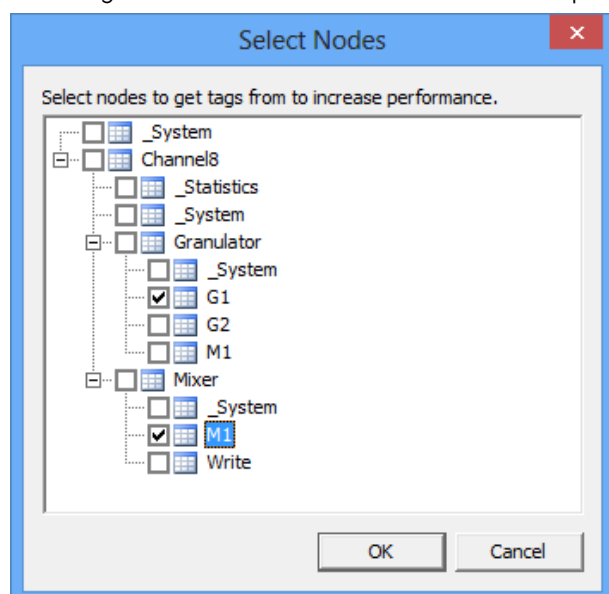
Click the + -icon to expand the computer to see all OPC Servers on the machine. If there are some problems with rights, or communication to the server, an error message will be presented. Otherwise a list of available OPC servers is presented. Servers listed with yellow cylinder icons are available for selection.



Select an OPC Server and use the **Test connectivity**-button to test communication with the OPC Server (by sending an OPC ping packet). A message will be displayed that shows the result of this test.

After the connection have been tested, select the OPC DA Server you want to use, and click on the **OK** button.

If the server supports branches, the following **Select Nodes** dialog will list the available branches. Select the branches that are relevant to the monitoring. The fewer branches selected, the better performance will be because fewer tags will be enumerated each time the SimApi is initialized by SIMCA-online or SIMCA.



You can also use a text file to specify which tags to expose, see 1.1.3 above.

## 3.2 The XML Configuration File

Below a sample XML file is shown. Many of the settings are made using the graphical interface above, but some has to be made by hand in the file. These settings are marked bold below, and described in the sub sections.

```
<?xml version="1.0" ?>
<settings>

  <setting key="LogFileSize" value="1048576" />
  <setting key="LogLevel" value="3" />

  <setting key="Connection" value="10443d89df125d92" />
  <setting key="URL" value="opcda://SEWS2/OPCSample.OpcDAServer/{6A5EEDEC-1509-4627-997F-
993CCB65AB7C}" />
  <setting key="UseNullTimeValues" value="0" />
  <setting key="BatchID" value="" />
  <setting key="Delimiter" value="." />
  <setting key="BrowseSupported" value="1" />
  <setting key="IsWriteVQTSupported" value="1" />
  <nodes>
    <setting key="Node_0_0" value="Sample Data" />
    <setting key="Node_0_1" value="Sample Data" />
  </nodes>

  <arraynode tag="" size="4" prefix="tag_">

    <arraytagnamesbystartandinterval start="10" interval="2" />

    <arraytag>tag_10</arraytag>
    <arraytag>tag_12</arraytag>
    <arraytag>tag_14</arraytag>
    <arraytag>tag_16</arraytag>
    <!-- This is a sample ArrayNode showing some available settings. You need to add a tag
name and configure the xml properly for it to work. -->
  </arraynode>
  <!-- You should add one ArrayNode for each tag that holds array data. -->
```

&lt;/settings&gt;

### 3.3 Settings

Log file settings	Explanation
LogFileSize	The maximum allowed size of the log file before the file is truncated.
LogLevel	The higher the value the more information is printed to the log file (log level 3 = information). Maximum value is 4 and minimum value is 0.
<b>Array node settings</b>	<p>For an introduction to array data, see 1.1.1 above. The xml file is used to configure the array data as follows:</p> <p>Multiple arraynode elements can be created, one for each tag that holds array data that you want to expose through the SimApi.</p> <p>The purpose of an arraynode is to hold the necessary settings so that the SimApi can expand the array data into individual virtual tags created below a new node with the name of the tag holding the array exposed by the SimApi.</p>
tag	Should contain the full tag name of the tag that has array data.
size	Should contains the size of the array data that should be read. The size must match the number of elements in the array on each read through the SimApi, otherwise no values will be returned by the SimApi and errors logged to the SimApi log file. This is by design; if the size is variable, most likely the tag names would not match anymore, and data inconsistencies could occur.
prefix	added in the beginning of all generated tag names (see below), can be empty, defaults to "tag_" if not provided.
arraytag elements	<p>Each giving a name of a tag. These are optional. If used you must provide the same number of arraytags elements as the size attribute set in the arraynode. If you don't provide arraytag names, or if the number of names is wrong the default will automatically generated names.</p> <pre>&lt;arraytagnamesbystartandinterval start="10" interval="2" /&gt;</pre> <p>This tells the SimApi it should generate names for the created tags using the prefix from above together with start and interval. The resulting names are shown above in the xml sample above. The default values for start and interval are 1 if not specified.</p>
<b>Configuration settings</b>	
UseNullTimeValues	<p>The following option can be used to control how current data is read from the OPC server. If you don't get the expected current values, you can change the value attribute to "1".</p> <pre>&lt;setting key="UseNullTimeValues" value="0" /&gt;</pre> <p>When UseNullTimeValues is set (=1) the SimApi uses "the null value for time", in the request the following parameters are used, bString=TRUE and an empty time string.</p> <p>If UseNullTimeValues is not set the SimApi uses the relative value "NOW+1S", this should be translated on the server at the time of processing the request.</p>
BatchID	<p>You need to configure which tags contains batch id that should be cached for the duration of one observation (as described in 1.1.2 above).</p> <p>You do this with the following element in the XML-file.</p> <pre>&lt;setting key="BatchID" value="" /&gt;</pre> <p>Set the value attribute to a string that is matched against the tags names. All tags containing the supplied value are considered batch id tags and will be cached. For example, if "BatchID" is set as value, the following tags will match and thus be</p>



cached:  
 "BatchID", "UnitABatchID", "BatchIDUnitB".

Note that only the tag name is specified, no nodes are used for this setting.

Delimiter	<p>The delimiter is used to distinguish the branch names in a node path and from the specified tags in opcds_tags.txt if they are loaded from a file.</p> <p>Change this setting if the OPC DA Server uses another delimiter than a period (.). Note that the delimiter can only be one character long.</p> <pre>&lt;setting key="Delimiter" value="." /&gt;</pre>
BrowseSupported	<p>Set the value for this setting to "0" if browsing is NOT supported by the OPC DA Server. Tags will then be loaded from the opcds_tags.txt file.</p> <pre>&lt;setting key="BrowseSupported" value="0" /&gt;</pre>
IsWriteVQTSupported	<p>Set the value for this setting to "0" if IOPCSyncIO2::WriteVQT is NOT supported by the OPC DA Server, this will instead fallback to use IOPCSyncIO::Write.</p> <pre>&lt;setting key="IsWriteVQTSupported" value="0" /&gt;</pre>

### 3.4 Troubleshooting

It can be tricky to get OPC working, because it depends on DCOM and there are a range of security settings that might have to be changed in Windows for it to work.

Refer to the following OPC support documents for information about this. These files are included in the SimApi installation and put in its program folder<sup>2</sup>.

- [OPC\\_and\\_DCOM\\_5\\_things\\_you\\_need\\_to\\_know.pdf](#)
- [OPC\\_and\\_DCOM\\_Troubleshooting.pdf](#).

When testing SimApis on freshly installed computers<sup>3</sup>, Umetrics has found the following relating to user accounts and security;

- The **same user account and password** must exist on both the SimApi computer and the OPC server computer. Otherwise it will result in problems when configuring the SimApi, specifically enumerating the OPC servers on the remote server computer so that the branches (nodes) can be selected. If both the server and SimApi computer is on the same domain this isn't a problem, but if one of the computers are not part of a domain it is very important.
- However, even if configuring the SimApi isn't possible because of the above mentioned reason, the SimApi can still work if the user account that the SimApi runs as has sufficient permissions on the OPC server itself. This means the copying a SimApi configuration file from another computer will work.

More tips;

- If you experience issues when configuring the SimApi, such as not seeing any OPC servers on a computer where you expect them you can use the Credentials-button in the dialog to setup the user name and password to use to connect to the OPC server computer. Use the Test-button to test your connection.
- Even if the configuration of the SimApi is successful (this runs in the security context of the user that performs the configuration), it can still happen that SIMCA-online service cannot start. The reason for this can be that the service runs as the user Local System on the computers, and that the computer account<sup>4</sup> of

<sup>2</sup> This typically means a folder in C:\Program Files (x86)\Umetrics\SimApi (or C:\Program Files\Umetrics\SimApi).

<sup>3</sup> Specifically, we tested on Windows XP SP3 and Windows 7 computers that are not part of a domain, connecting to a remote Matrikon OPC server on a computer part of a domain. In this instance we had to create a local account with the same name on both the OPC server and test computers, and be logged on as that account on the test computers.

<sup>4</sup> A computer account is similar to a user account but for a specific computer. It is of the form ComputerName\$. For more information about Local System and computer accounts, see [http://msdn.microsoft.com/en-us/library/windows/desktop/ms677973\(v=vs.85\).aspx](http://msdn.microsoft.com/en-us/library/windows/desktop/ms677973(v=vs.85).aspx)

the SIMCA-online server computer doesn't have the appropriate rights on the OPC server. In this case specifying the Credentials in the SimApi configuration can help.

- If OPC Core Components isn't installed you will get the error message "Class not registered" (or "Interface not registered") when expanding an OPC server in the SimApi configuration dialog.

**A good way to test OPC connectivity is to use the free software MatrikonOPC Explorer which you can download from <https://www.matrikonopc.com/products/opc-desktop-tools/index.aspx>.**

## 4 Support

This SimApi is developed by Sartorius Stedim Data Analytics. For support, please visit <https://umetrics.com/support>