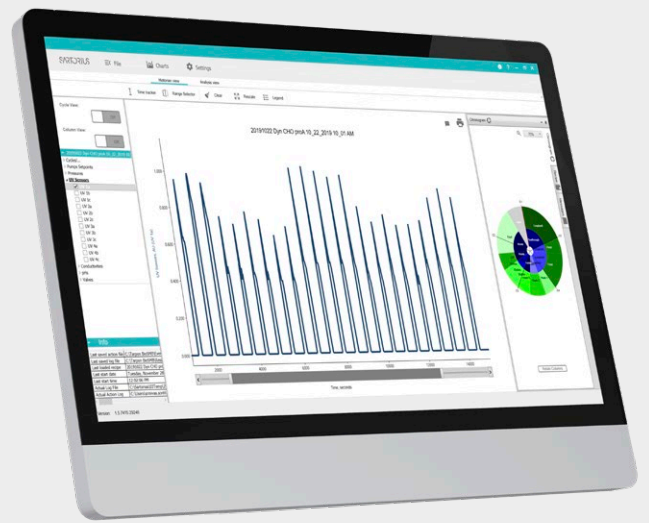


# Resolute® BioSMB Data Analysis Software



## Product Information

The Resolute® BioSMB Data Analysis software enables users to analyze large amounts of Resolute® BioSMB PD data efficiently and rapidly, going beyond the limitations of standard spreadsheet tools when processing large amounts of data. For users who are running multi-column chromatography (MCC), this software solves the time consuming and difficult process of visualizing and sharing historical Resolute® BioSMB PD data.

The software can perform a wide range of specific chromatography calculations.

## Features and Benefits

- User-friendly processing of large amounts of data
- Greatly accelerates time to process large volumes of data when compared to standard spreadsheet tools

## Relevant Applications

- Multi-column Chromatography (MCC)
- Batch Chromatography

# Technical Specifications

## General Features

- Software package for viewing and analyzing historical Resolute® BioSMB PD data
- Visualizing Resolute® BioSMB PD data on a per cycle or per column basis
- Performing general chromatography peak and frontal analysis
- Exporting user-configurable graphs and images that are representative of the data
- Exporting data in a SIMCA-friendly format
- Annotating selected points
- Loading large datasets
- Visualizing Resolute® BioSMB PD data in chronogram format
- Time tracker – visualizing the chronogram and trends simultaneously
- Overlay data from multiple cycles or runs
- Customize scaling
- Export into Microsoft® Excel®
- User defined Range Selector to get max. value

## List of calculations

- Height Equivalent of a Theoretical Plate (HETP)
- Asymmetry
- Number of theoretical plates
- FWMH “Full Width at Mid-Height”
- Area: area between curve and baseline
- Tailing (computed at five percent of peak maximum)
- Highest peak in a selected region
- Begin and end: starting point and end point of baseline in seconds
- 1<sup>st</sup> derivative
- 2<sup>nd</sup> derivative

## System Requirements

Specifications	Minimum	Recommended
Operating System	Windows 7	Windows 10
Environment (.NET Framework)	4.5.2	4.5.2 or higher
Processor (Intel or AMD)	x86-64	x86-64 w/4 core
Disk Space	20 MB	Higher*
RAM	4 GB	8 GB
Screen Resolution	NA	1920 × 1080

\*Disk storage could vary depending on the size of the results file, which depends on the duration and complexity of the experiments (runs).

# Ordering Information

Description	Quantity	Order Number	Distribution
Resolute® BioSMB Data Analysis Software	1 (10 installations per license)	BIOSMB-DA-FF	New Customers* Existing Customers**

\* For new systems, the Resolute® BioSMB Data Analysis Software is pre-installed on the Resolute® BioSMB PC provided with the Resolute® BioSMB equipment. For extra copies, contact Sartorius. It can be supplied via email, USB, or placed in a file share service provided by the customer.

\*\* Customers purchasing the Resolute® BioSMB Data Analysis Software outside of the new system will receive it via email, USB, or placed in a file share service provided by the customer.

## **Germany**

Sartorius Stedim Biotech GmbH  
August-Spindler-Strasse 11  
37079 Goettingen  
Phone +49 551 308 0

## **USA**

Sartorius Stedim North America Inc.  
565 Johnson Avenue  
Bohemia, NY 11716  
Toll-Free +1 800 368 7178

 **For more information, visit**  
[www.sartorius.com](http://www.sartorius.com)