



## SIMCA-online® ReadMe and Installation guide

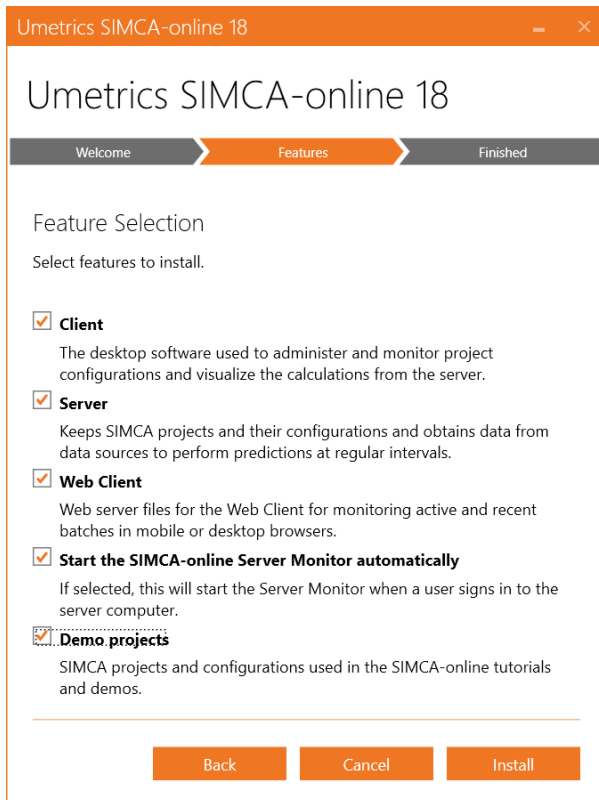
2024-06-24

Thank you for choosing SIMCA-online 18, part of the Umetrics® Suite of data analytics solutions. This short guide describes how to install SIMCA-online and how to run it. For a new installation it is recommended to install the demo data to quickly get started.

General information about SIMCA-online are available at [www.sartorius.com/umetrics-simca-online](http://www.sartorius.com/umetrics-simca-online). New features in this release along with other changes and system requirements can be found in the [SIMCA-online 18.0](#) knowledge base article. New features in the Web Client in this release are listed in [SIMCA-online Web Client 18.0](#).

### Installation instructions

Run SIMCA-online\_18\_x64\_Setup.exe to start the installation wizard. On the second page, select features. It is recommended to select all features on a server computer.



For client PCs you can select to just install the Client (and Demo projects if you want those).

## Server Options

After finishing the installation wizard, the **SIMCA-online Server Options utility** is launched. It has three tabs:

- Paths and directories – shows the current license and the path to the SIMCA-online database directory.
- SimApi – for specifying the connections to data sources.
- Miscellaneous – settings for Active Directory authentication and other server parameters.

## Licensing

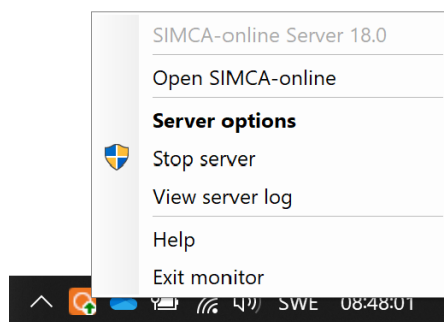
SIMCA-online server will run in demo mode without a license. The demo is limited to the DBMaker SimApi which connects to the database simulation software DBMaker but includes all other features of the server.

An activation ID delivered by email is used in the **SIMCA-online Server Options utility** to request, download and install a license.




## SIMCA-online Server Monitor

**Server Monitor** is a small utility that can be used to start and stop the service, open the client, or to launch the server log. It is added to the notification area (system tray) of the server computer if you select that feature during installation.

The icon shows the server status:



### Status

-  Server is stopped
-  Server is starting up
-  Server is running

## SIMCA-online Client

To connect and log in to a server, provide the server address (or name of the server computer), a username and password. The default username is

Administrator with empty password. You will be prompted to change an insecure password on first log in.

## Next steps

See **03 - Using SIMCA-online > Getting started with demo data** in the SIMCA-online help.

## Troubleshooting and advanced installation

### Modifying installed features

To change the installed feature, uninstall and re-run the installation program and select the features you want. The license and any settings you have made will remain unchanged.

### Administrative installations

The installation can be customized on the command line, including licensing and feature selection. This allows administrators to simplify the installation for their users.

Learn more in the knowledge base at [Custom installation of MODDE, SIMCA, SIMCA-online](#)

### More information

The latest information can be found in the Umetrics Knowledge base at [sartorius.com/umetrics-kb](http://sartorius.com/umetrics-kb). Visit [www.sartorius.com/umetrics-simca-online#downloads](http://www.sartorius.com/umetrics-simca-online#downloads) to download guides such as Implementation Guide, Technical Guide, and tutorials for Control Advisor. SimApis for connecting to data sources are described at [www.sartorius.com/umetrics-simapi](http://www.sartorius.com/umetrics-simapi). For technical support, installation and SimApi questions contact [umetrics\\_support-SIMCA-online@sartorius.com](mailto:umetrics_support-SIMCA-online@sartorius.com).