

# Quantifying cell subsets and heterogeneity in living cultures using real-time live-cell analysis

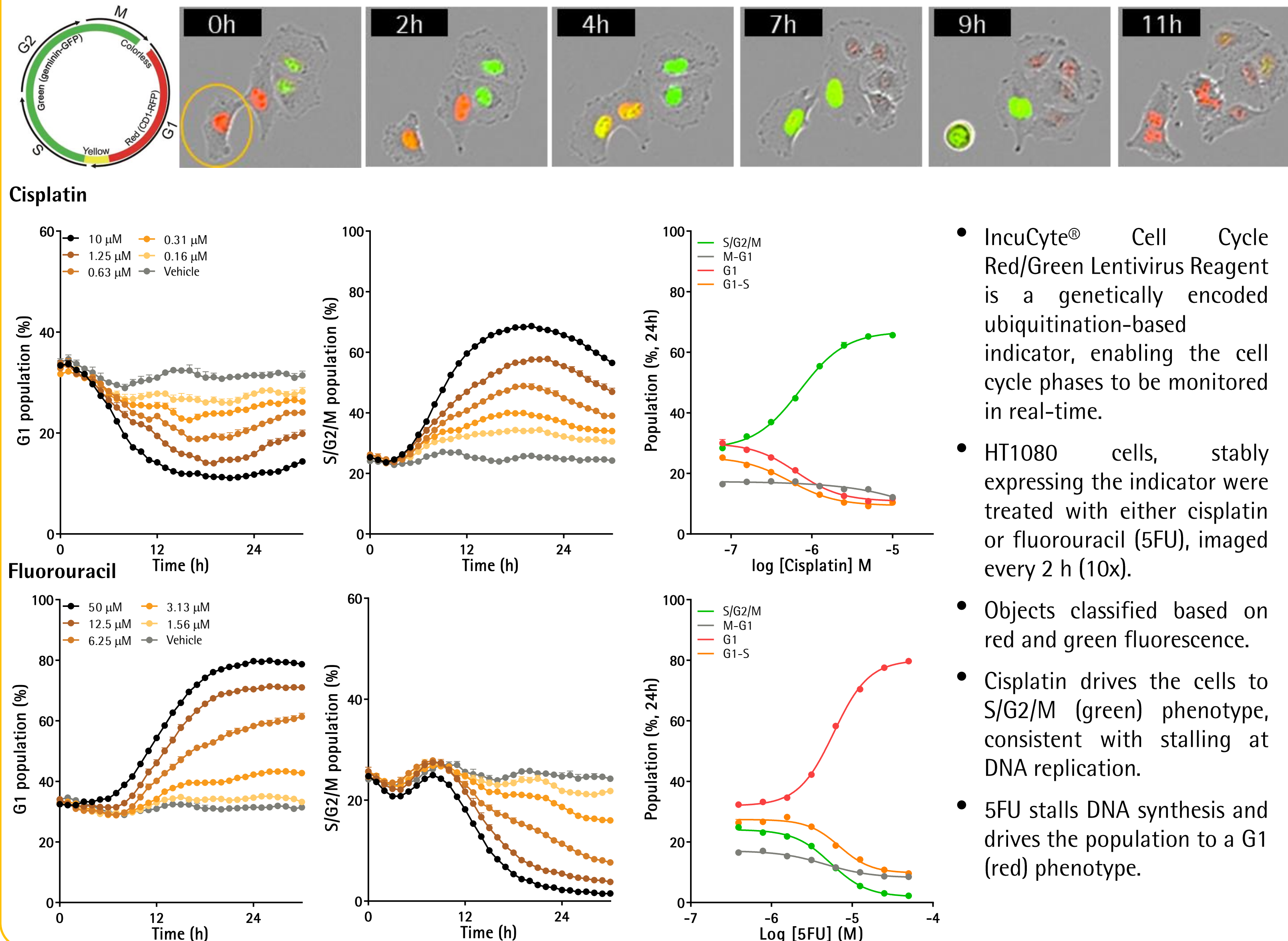
N. Bevan, T. Jackson, C. Szybut, L. Kelsey, H. Campwala, T. Dale, N. Dana, N. Holtz, E. Endsley, D. Appledorn, C. Schramm, L. Skerlos, R. Lister, D. Trezise  
Essen BioScience, Welwyn Garden City, AL7 3AX UK & Ann Arbor, MI, 48108, USA

## Summary & Impact

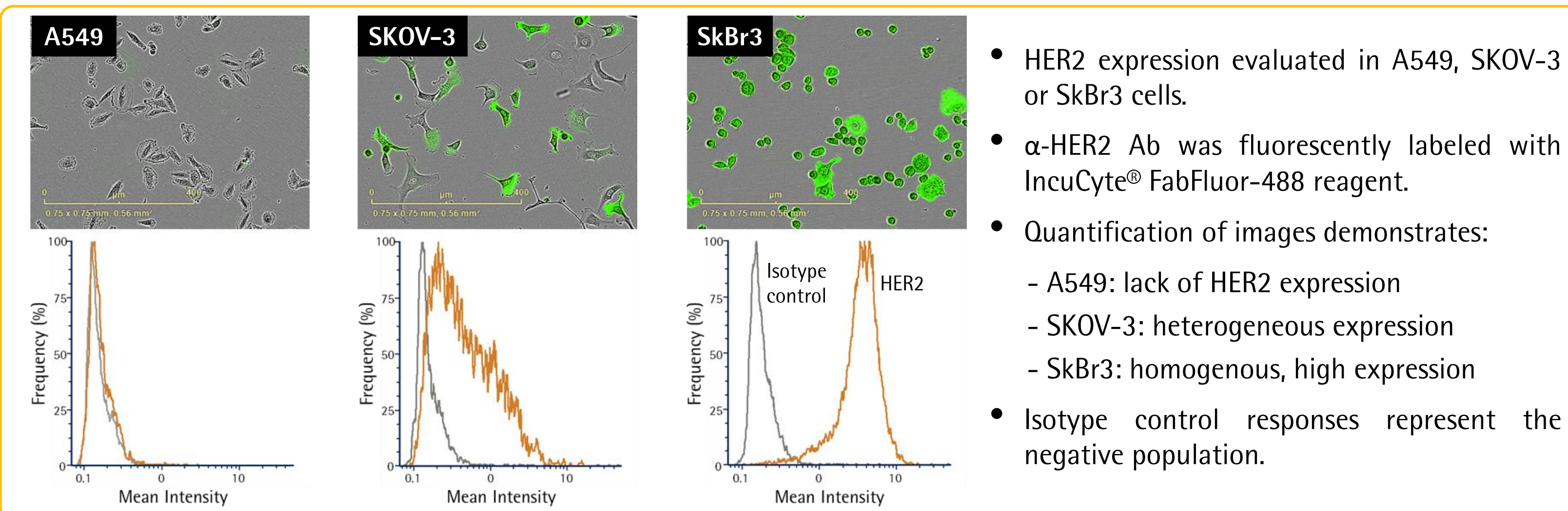
- Heterogeneity exists in all cellular populations, ranging from the cell types present to differences at the genetic level or stage of cell cycle. This heterogeneity plays an important role in how populations react in response to therapeutics and biological stimuli.
- To date IncuCyte® analysis has been solely based on population-averaged measures whereby object (cell) data is consolidated into an aggregate metric.
- However, effects on subpopulations can sometimes be masked by larger numbers of 'non-responsive' cells or similar sized populations may produce opposite responses that result in a net zero result.
- Analysis at the cell-by-cell level promises valuable and additional biological insight beyond which whole population measures may deliver.
- The IncuCyte® Cell-by-Cell Analysis software module and associated reagents provide automated image capture and analysis in real time in order to provide an integrated solution for monitoring at the cell-by-cell level and increase biological insight.
- Here, we present data validating the IncuCyte® Cell-by-Cell Analysis segmentation & classification with various examples of biological activity to show parameter changes over time. Importantly, these changes can be related to function.

## Analysis of cell cycle using live-cell analysis

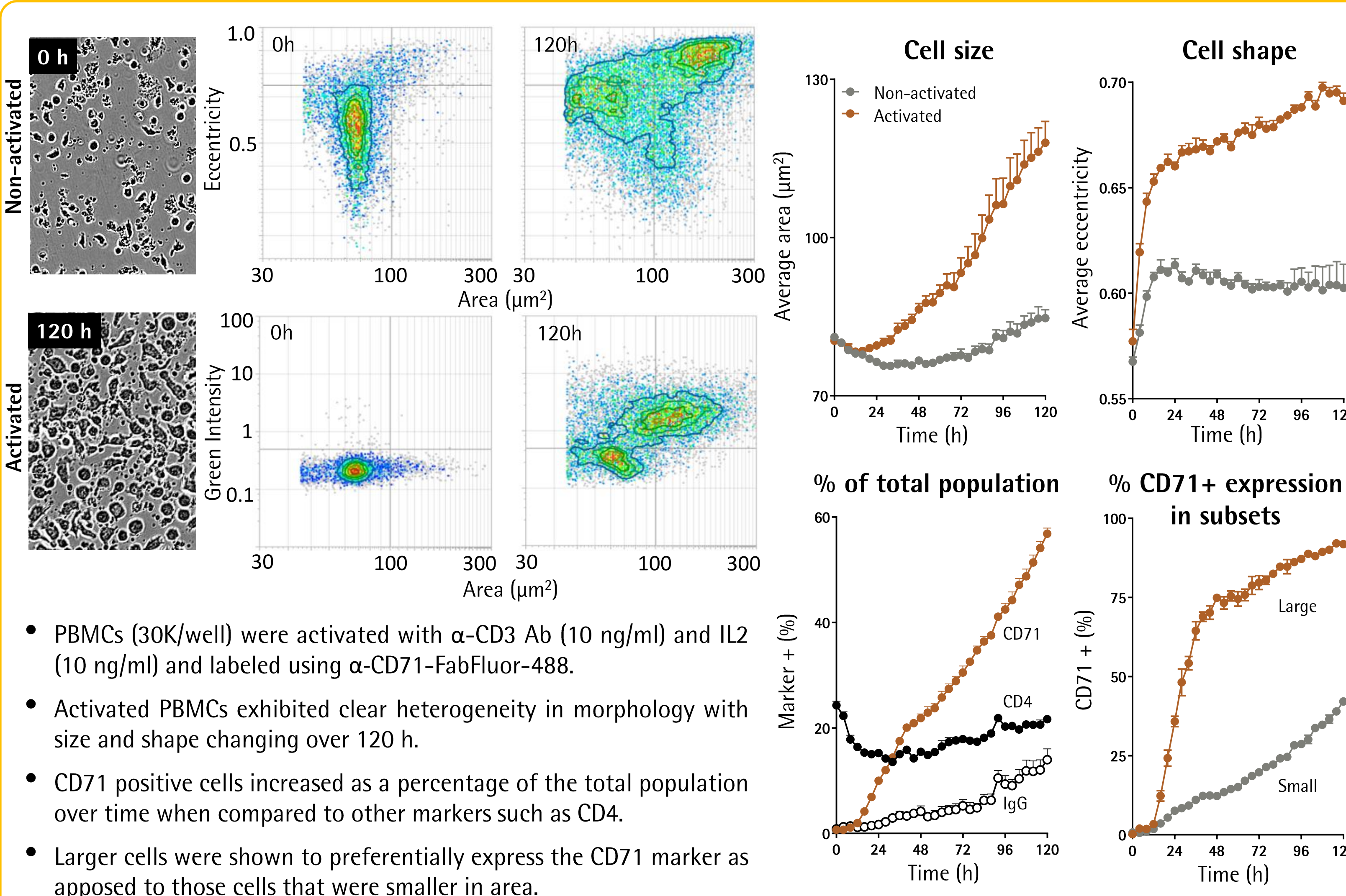
### Visualize phases of cell cycle over time



## Phenotyping of HER2 expression, to show heterogeneity



## Monitoring PBMC activation: morphology & protein expression

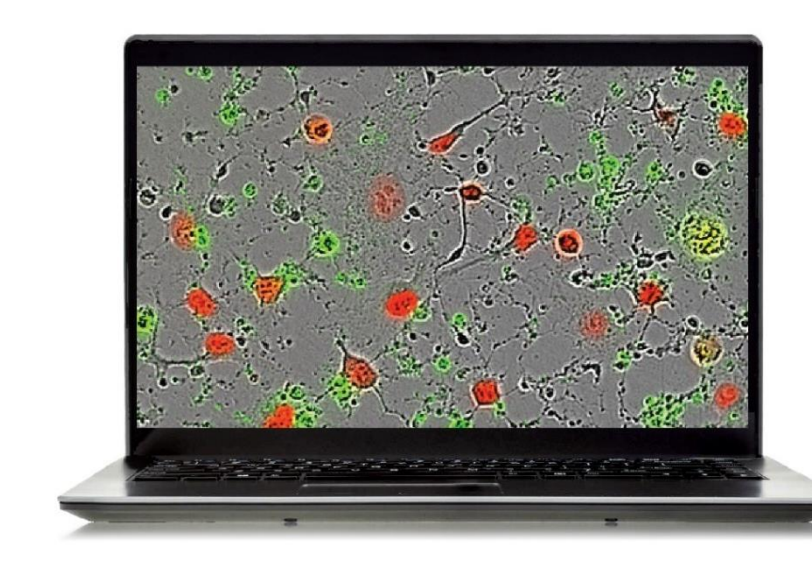


## IncuCyte® System for Continuous Live-cell Analysis: Methodology



**IncuCyte® Live-Cell Analysis System**

A fully automated phase contrast and two-color fluorescence imager that resides within a standard cell incubator for optimal cell viability. Designed to scan plates and flasks repeatedly over time.



**IncuCyte® Software**

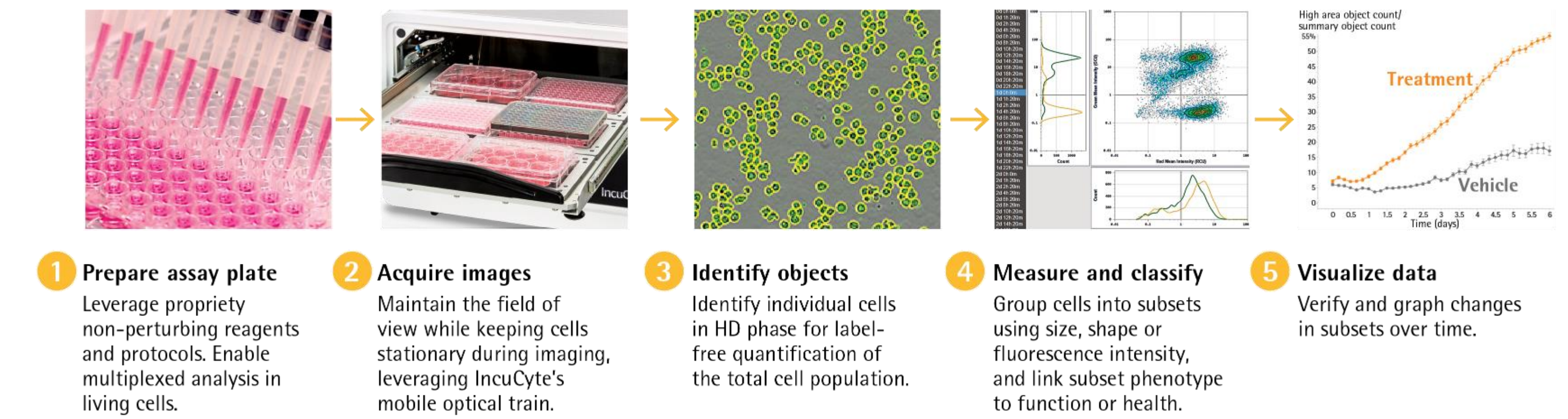
Fast, flexible and powerful control hub for continuous live-cell analysis comprising image acquisition, processing and data visualization.

**NEW: IncuCyte® Cell-by-Cell Analysis Software Module**

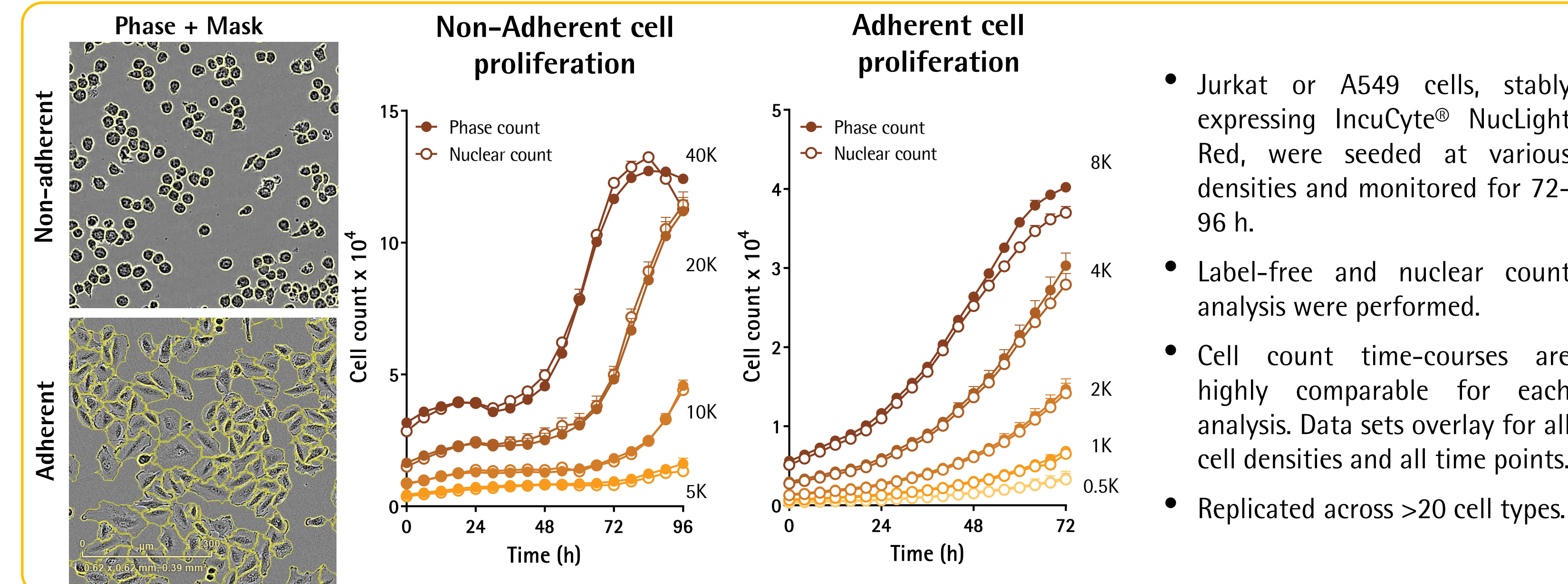


**IncuCyte® Reagents and Consumables**

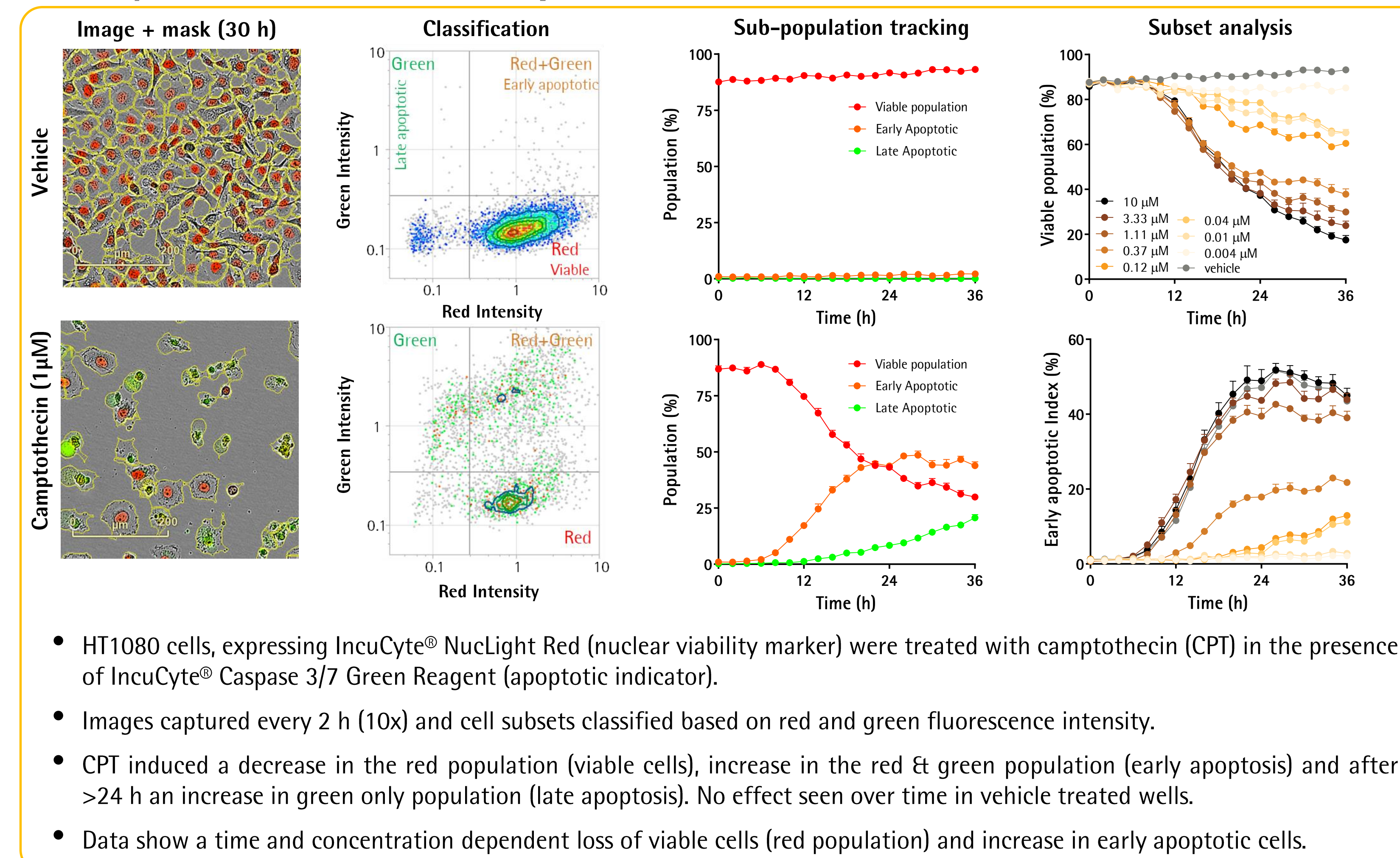
A suite of non-perturbing cell labeling and reporter reagents. Includes nuclear-targeted GFP and RFPs for cell counting plus no-wash cell health reagents for apoptosis and cytotoxicity.



## Label-free, accurate cell segmentation



## Analysis of cell health: Population identification



## Specific, non-perturbing fluorescent labeling

