



TakeOne® 25mm *for Ingold ports*

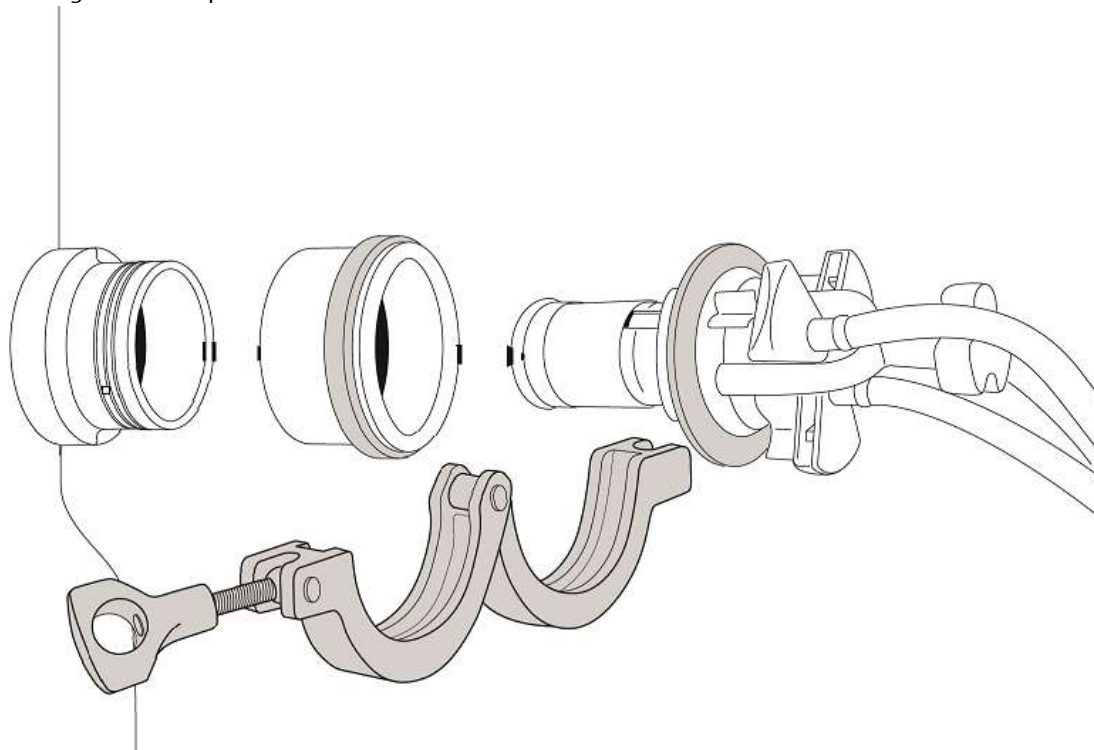
1. Installation

Select the right TakeOne® 25mm Adaptor (multi-use) according to the Ingold port length:

Catalog number	Description
<u>INGDEPTH02</u>	TakeOne® 25mm depth accessory 2 (for 46mm ports)
<u>INGDEPTH03</u>	TakeOne® 25mm depth accessory 3 (for 52mm ports)
<u>INGDEPTH01</u>	TakeOne® 25mm depth accessory 1 (for 30mm ports)
<u>INGDEPTH04</u>	TakeOne® 25mm depth accessory 4 (for 40mm ports)

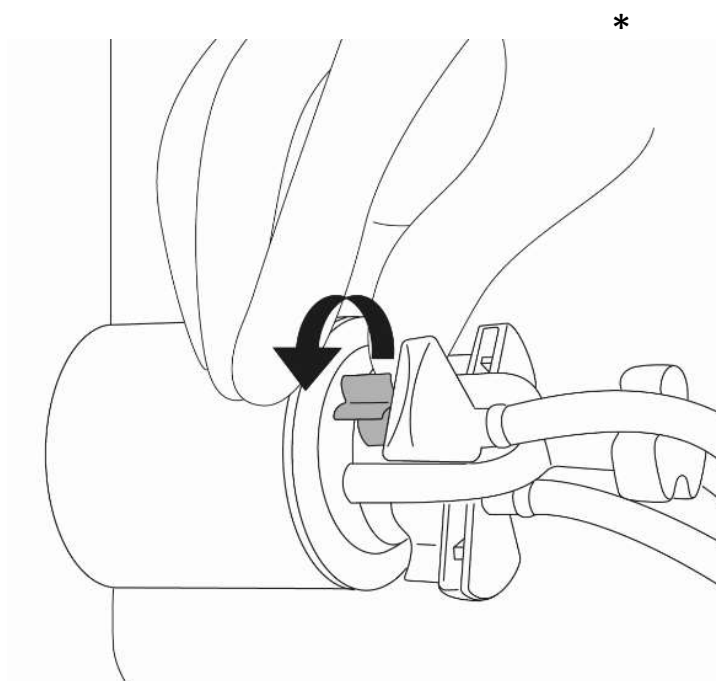


Note : No gasket is required

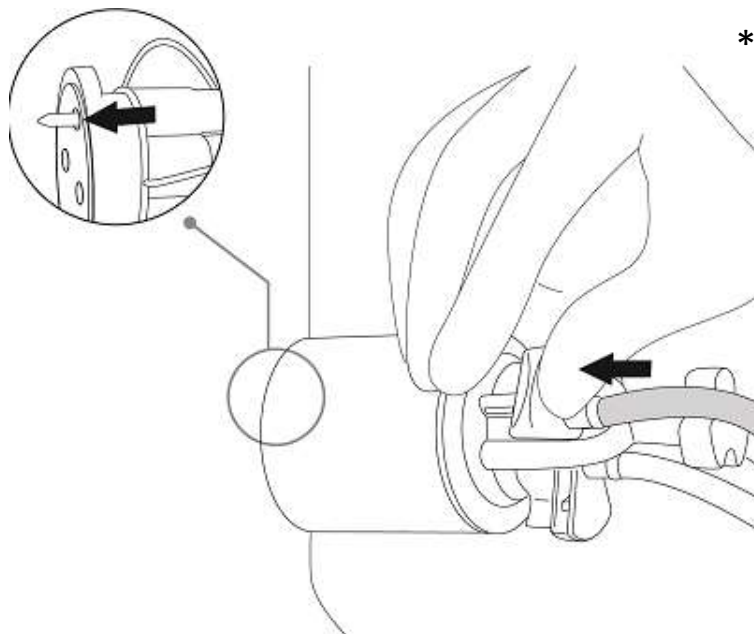


2. Sampling with TakeOne®

- Remove tab block

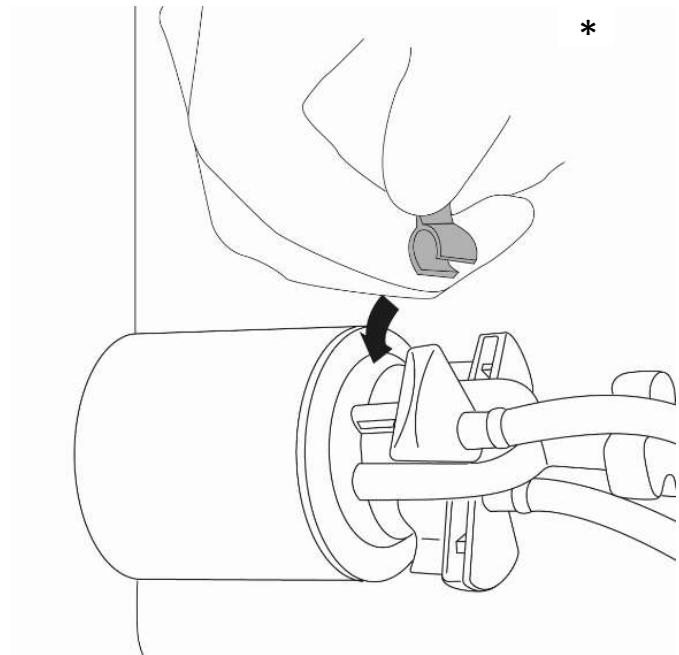


- Take a sample

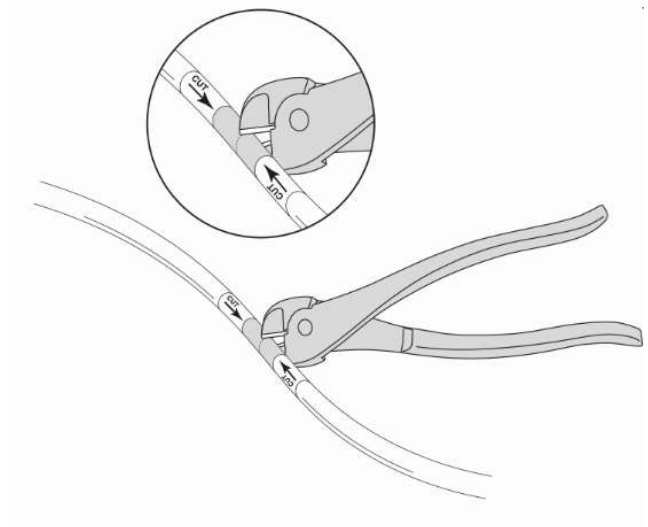


**Note: for simplification, the tri-clamp union has not been illustrated*

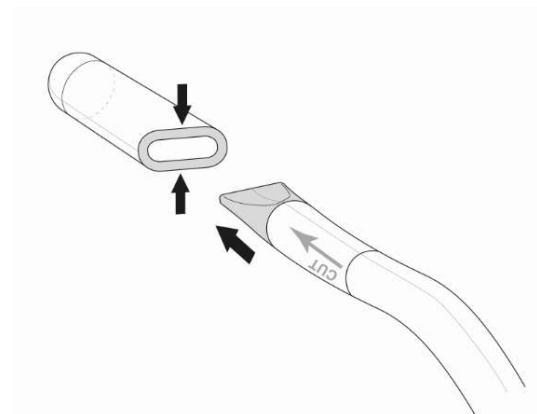
- Put tab block back in place



- Remove sampling line



- Protect lines



**Note: for simplification, the tri-clamp union has not been illustrated*